



Logistics for CMaT ERC Retreat August 15-17, 2018

<http://cellmanufacturingusa.org/cmat-annual-retreat>

Location:

The meeting will take place at the Discovery Building: <https://discovery.wisc.edu/>
The address is 330 N Orchard St, Madison, WI 53715. A campus map can be viewed at: <http://map.wisc.edu/>

Attire:

The dress code for the retreat is casual. However, we request that you do not wear shorts or flip-flops to the Thursday-Friday meetings. We want everyone to be comfortable – jeans, khakis, slacks, T-shirts and other comfortable clothing are fine.

Transportation:

Union Cab has provided a direct contact person, David Lee: 608-242-2007 or david_lee@unioncab.com You may contact David directly to arrange for a pick up in advance or on the fly. You are also welcome to use Uber/Lyft. Normal travel reimbursement guidelines apply.

Parking at the Discovery Building: <https://discovery.wisc.edu/parking>

Nearby parking is available in [lot 20](#), which is located across University Avenue from the Discovery Building and can be accessed from University Avenue. Parking also is available in [lot 17](#), which is behind Engineering Hall and Camp Randall Stadium and can be accessed via Engineering Drive. [Lot 80](#), the Union South underground parking garage, can be accessed from Dayton Street. From 7 a.m. until 4:30 p.m., visitor parking costs \$1 per 30 minutes for the first two hours and \$1 per hour thereafter, up to a maximum of \$12 per day. From 4:30 p.m. until midnight, visitor parking costs \$1 per hour, up to a maximum of \$5 per evening.

Doubletree Hotel Shuttle:

For guests staying at the Doubletree hotel:

[shuttle between the hotel and Discovery Building](#)

Thur, Aug 16: shuttle leaves at 6:55am & 7:10am

Fri, Aug 17: shuttle leaves at 6:55am & 7:10am

[Shuttle between Discovery Building and airport](#)

Fri, Aug 17: shuttle leaves at 2:00pm & 2:30pm



Contact Information:

The following staff can be reached on their cell phones:

Andrea Soyland: 770-313-3487

Erin Bryant: 601-319-3746

Angela Ayers: 770-354-2283

Lakeita Servance: 803-917-2303

Map:

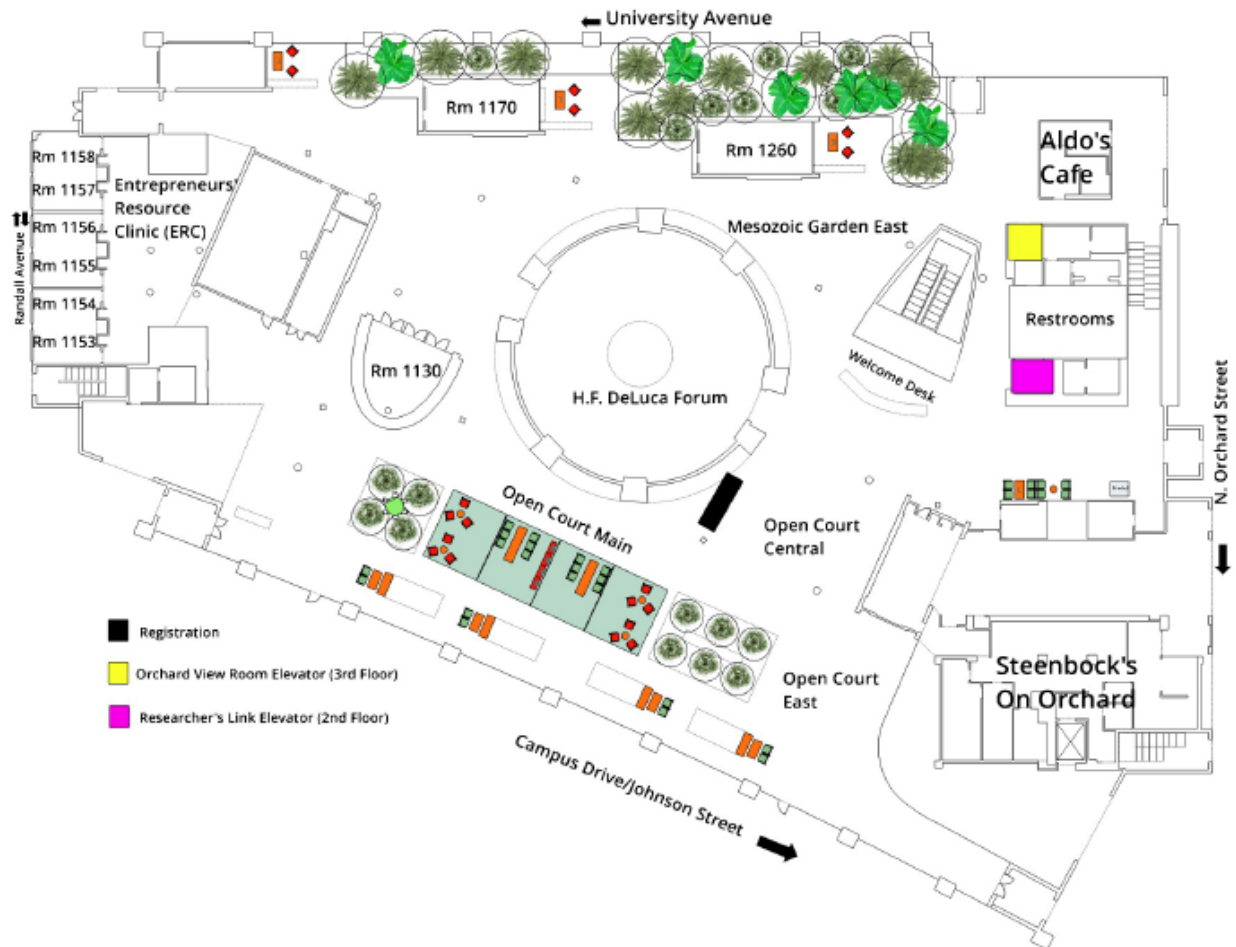
Here is a map with key landmarks





Meeting room diagram:

Please refer to the agenda for meeting room locations for each session.



Luggage Room:

Room 1130 will be available for luggage storage throughout the event. Please see a CMaT staff member for access (Andrea, Erin, Angela, Lakeita, Lilia).

Wifi at the Discovery Building:

Go to Settings and select: **Discovery-Guest** or **Towncenter**

Open a browser

Enter the following address in the search bar:

<http://discovery.wisc.edu>

You will be redirected to a wireless authentication page

Scroll to the bottom of the page and click **Accept**

Transportation to airport after meeting ends:

You may arrange for Uber/Lyft or contact Union Cab. Doubletree will have a shuttle leaving at 2:00 and 2:30.